

# **DKSR Offer and Price List**

Autumn 2022

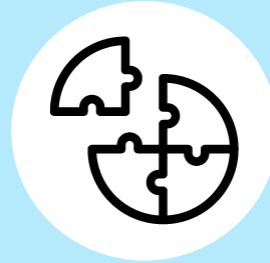
# PACKAGES



## DISCOVER

- Platform for 6 months
- Up to 5 Data sources
- Open Source Dashboard
- Introduction & Use Cases workshop
- [Community](#)-Membership

**14.950 EUR**



## GET INTO IT

- Platform for 12 months
- Up to 6 Data sources
- Introduction and Use Case Workshop
- Community Use Cases
- Open Source Dashboard
- [Community](#)-Membership

**49.900 EUR**



## TAKE OFF

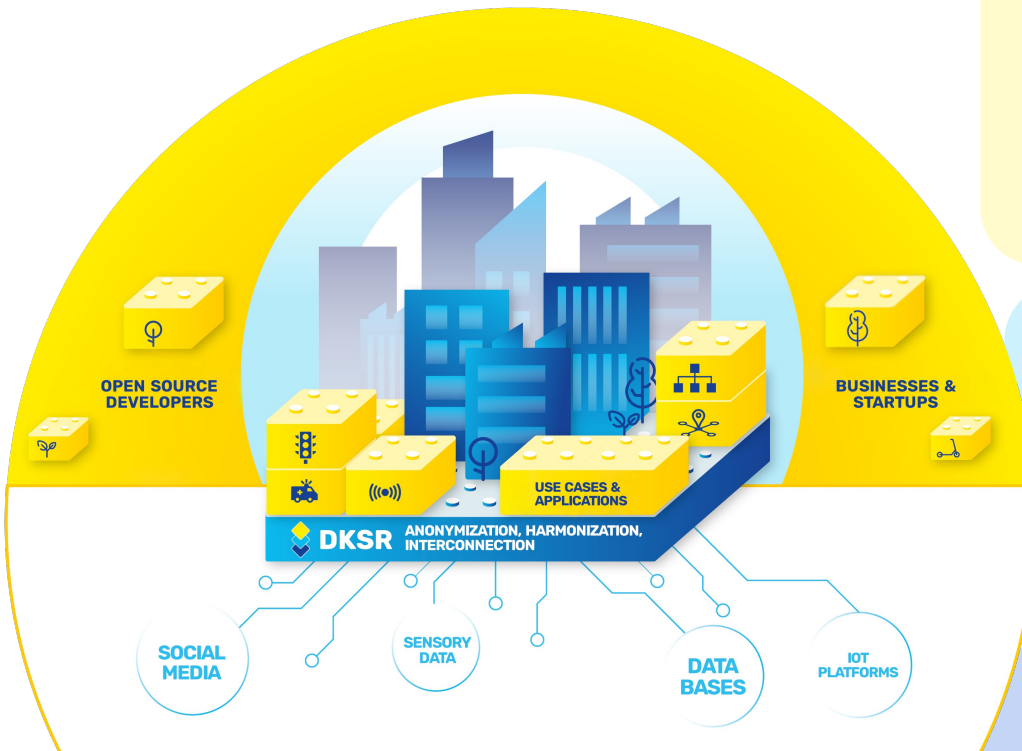
- Platform for more than 12 months
- Up to 9 data sources
- Development of a new Use Case including an open-source Dashboard
- Own new Use Cases
- Joint Agile Process
- [Community](#)-Membership

**89.900 EUR**

# DKSR PLATFORM BUILDING BOX

Municipalities and municipal enterprises can not only purchase the DKSR platform as a package, but can also order and use **platform, data connections and applications** in different variants according to their individual needs – like parts out of a modular box. The different modules of technology and services are interlinked and will be individually presented on the following slides.

# Overview: Modules



## Applications (Use Cases)

The Urban Data Platform supports a wide range of smart applications. These can be developed locally or taken from an existing portfolio. Depending on this, (own) effort and prices vary.

a) Joint use case development

b) Use case adaption

- Open Source
- Community
- Proprietary

## Platform variants

An Urban Data Platform is a complex interplay of cloud services, computing power and micro-services for data processing. **Depending on the requirements of the applications, the "platform size" can therefore be varied**, which has an impact on costs for provisioning and operation.



a) Test Platform



b) Pilot Platform



c) Standard Smart City Platform



d) High Volume Smart City Platform

## Data connection (Connectors)

Many different data sources can be connected to the DKSR platform via connectors. DKSR provides over 160 existing connectors. If a new data source is to be connected, there are different ways of proceeding.

a) Adapt connector

b) Develop connector

- Own development
- DKSR service: Sizes S / M / L

# Your connection to external data: Connectors

Whether live temperatures from sensors or fine dust values from air quality meters: data needs a connector in order to find its way from the data source to the platform in the appropriate format.

## Individual Connector

Customer develops connector independently according to need, DKSR ensures quality

495 EUR

## Customised Connector

Connection of a connector from the connector list - with adaptation to specific application

1.795 EUR

## New Connector

Connection of a new data source;  
Depending on the complexity and size S / M / L

**S** 3.740 EUR

**M** 5.980 EUR

**L** 9.950 EUR

# Platform variants (Selection)

Provision, Support & Operation for 12 months



## High Volume Smart City-Platform

**81.660 EUR**

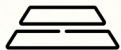
*Operational follow-up costs: 6.005 EUR / month  
2 Instances (OTC) Servicelevel AA*



## Standard Smart City-Platform

**50.700 EUR**

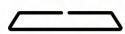
*Operational follow-up costs: 3.425 EUR / month  
1x Prod. Instance (OTC) Servicelevel A*



## Pilot platform

**38.160 EUR**

*Operational follow-up costs: 2.380 EUR / month  
1x Staging Instanz (OTC) Servicelevel B*



## Test platform

**11.900 EUR**

*Operational follow-up costs: 420 EUR / month  
Mandate on DKSR Instance*

# Our Community- An overview of Services

More details of the offer in slides 8 until 14



**Brown Bag  
Lunch:  
Vitamin D(ata)**



**Webportal  
Square**



**Digital  
Knowledge  
Package**



**Network meeting  
& Use Case  
workshop**



**Symposium  
Urban Data  
Summit**



**Shared Code &  
Community-  
Coins**

**Open for all Cities**

**For core members  
190 EUR / Month**



# Adaption from Community- Applications

Some Smart City applications from the community are already ready for adaptation. If you want to know which implementations are available, please contact us!

## S

Adaption of an existing  
Use Case  
(small)



**5.900 EUR**

## M

Adaptation of an existing  
Use Case  
(middle



**12.900 EUR**

## L

Adaptation of an existing  
Use Case  
(big)



**19.900 EUR**

# New Smart City Developments- Use Cases

Use Cases 1.250 €



## STOCKTAKING



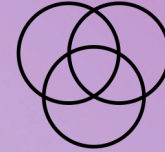
2 Workshops to identify the status quo  
& draft: How can the DKSR Platform  
be put into use from here?



## CONCEPT



Elaboration: What requirements have  
to be met? What should the user  
experience look like?



## DATA MODELS



Connection of the data;  
software programming /  
implementation of the data  
model in the platform

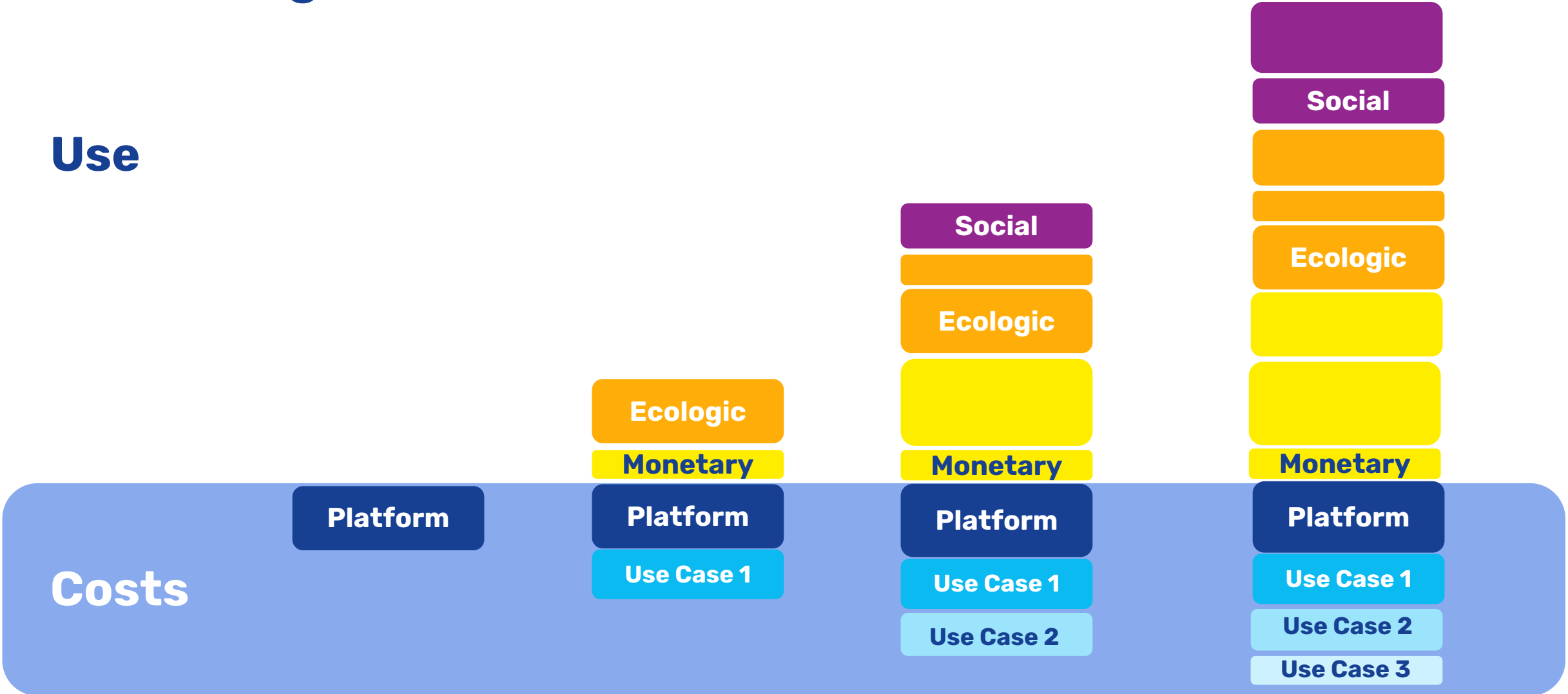


## OPERATION



Visualizations, connection of  
application, continuous platform  
operation

# The platform effect for your city: Increasing value for little cost



# OPERATIONAL COSTS

# URBAN DATA PLATFORM

Platform packages and platform variants contain different service levels consisting of the modules **operation, maintenance, hosting, support and cloud costs**. These are part of a service level agreement (SLA) that DKSR concludes with its customers.

These modules are broken down in detail on the following slides.

# Operation according to service level- SLA



Servicelevel	
Operation	<div>B</div> <div>A</div> <div>AA</div> <div>AAA</div> <div>Number of instances, monitoring of components, guaranteed maximum downtimes, service times</div>
Support	<div>Response times, availabilities, resolution times,</div>
Cloud Paket	
Cloud	<div>Sandbox</div> <div>Production</div> <div>Complete</div> <div>Instances, server capacity, load balancing, firewall, databases, cloud search service, NAT gateway, cloud traffic, contract duration (12 / 24 / 36 M)</div>

# Service & Support

	Service level:				
	Pilot	B	A	AA	AAA
Instance	DKSR Pilot Instance	Bis zu 2	Bis zu 2	Bis zu 3	3 + Instances
Monitoring	Minimal	Minimal	Standard	Inkl. CEP	Inkl. CEP & Hardware
Max. Downtime	n.A.	64 hours. p.a.	40 Std. p.a.	32 Std. p.a.	12 Std. p.a.
Service time		Mo. – Fr. 8h – 17h			+ Weekends 9:00 – 18:00 for errors 1
Operation Costs	450€	750€	1.250€	2.250€	2.950€
Response time	n.A.	4 h.	4 h.	2 h.	immediate
Availability	n.A.	Mo. – Fr. 8h – 17h	Mo. – Fr. 8h – 17h	+ weekends 9:00 – 18:00 for critic reports	24/7
Solution Time	n.A.	Best Effort	Best Effort	Best Effort	1 weekday
Support Costs*		650€	650€	1.250€	2.500€
		1.400€	1.900€	3.500€	5.450€

\* Support can be ordered separately as soon as the need arises.

# Cloud Costs per Month (Hosting)

		Vertragsdauer			
		<12 M	12M	24M	Discount for advance payment
Cloudpaket	Instanzen	Monatspreise			
DKSR Pilot	Mandate on the DKSR Pilot Instance	420 €	380 €	n.A.	
Sandbox	1 x Staging Instance	1.149 €	980 €	925 €	Order for 12 M: 5% discount
Standard	1 x Production Instance	1.749 €	1.525 €	1.450 €	
Advanced	1 x Advanced Instance	2.049 €	1.775 €	1.679 €	Order for 24 M 12% discount
Full Service	1 x Staging, 1 x Production	2.900 €	2.505 €	2.375 €	
Complete	1 x Dev, 1x Staging, 1 x Production (Advanced)	4.949 €	4.280 €	4.054 €	
Add. outbound traffic per month					
	< 200 GB	< 2 TB	< 5 TB	< 10 TB	< 20 TB
	0 €	140 €	330 €	660 €	1.260 €

## Get in touch:



### **Dr. Alanus von Radecki**

CEO

Email: [radecki@dksr.city](mailto:radecki@dksr.city)

Tel.: +49 176 8136 3418



### **Lea Hemetsberger**

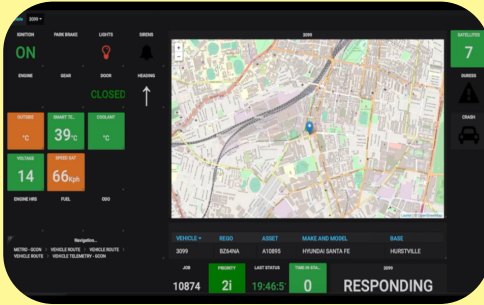
Bid & Relations Manager

Email: [lea.hemetsberger@dksr.city](mailto:lea.hemetsberger@dksr.city)

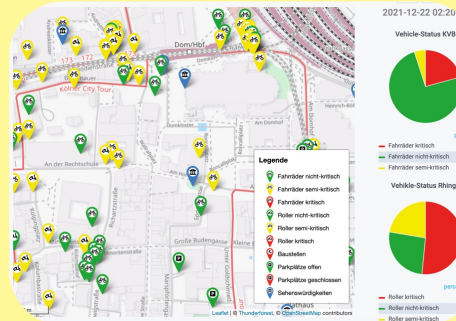
Tel.: +49 176 8136 3418

# Appendix

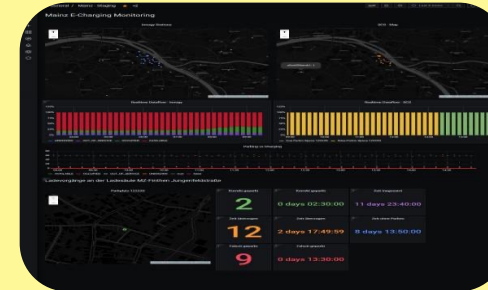
# Open & Community Use Cases



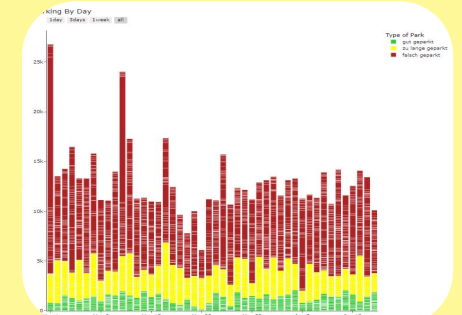
**Open-Source Grafana Dashboard**



**Micromobility Management**



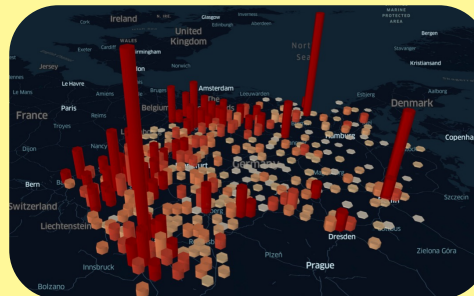
**Monitoring of Charging Stations**



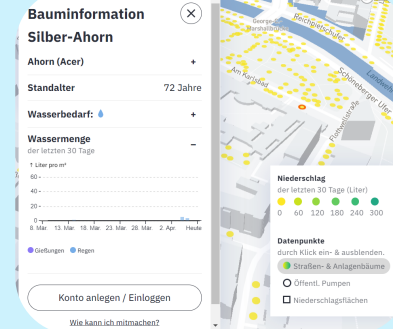
**Incorrect-Parking Detection**



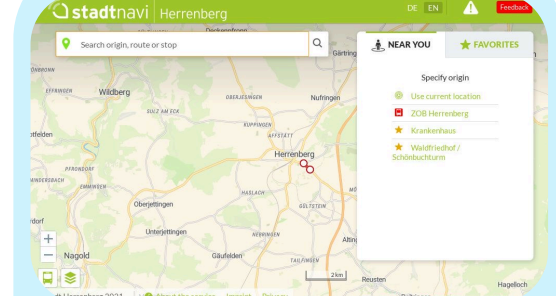
**Live traffic visualization (INRIX / TomTom)**



**Open-Source Geo Visualization Tool**



**Neighbourhood Irrigation**

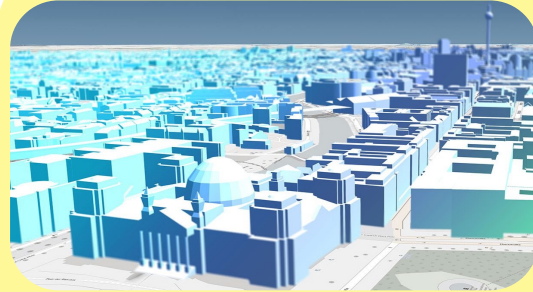


**City Navi**

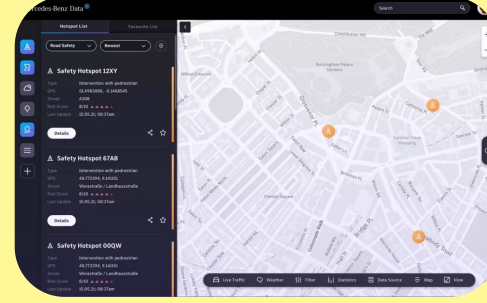
# Use Cases of our Partners (Selection)



**Urban Cockpit  
[ui!]**



**3D City Model (VCS)**



**Identification of risk points  
(Mercedes)**



**Smart Parking  
[ui!]**



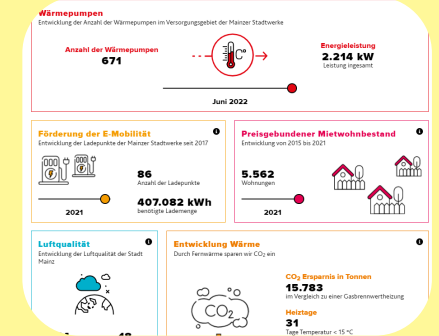
**Visitor Flow Counting (ui  
/ Fraunhofer)**



**Noise Identification in  
real-time (Jalud)**



**Clima-Dashboard  
[ui!]**



**Sustainability Monitor  
(InsertEffect)**

# DKSR Open Urban Pulse Connector Library

Version: 2022-11-01

The following is a reference list of some of the connectors already available in the DKSR Open UrbanPulse. Please note that some connectors also require additional fees and third-party licenses.

1. **Acoem Duo 01db** (Noise sensors)
2. **AEC ILLUMINAZIONE** (Smart Lighting)
3. **AGT** (Video analytics pedestrian recognition)
4. **Alperia E-Mobility** (Charging stations)
5. **Alperia IoT Hub** (cloud-to-cloud connector)
6. **AQMesh** (Air quality data)
7. **Aquiba** (Water Meter Systems)
8. **Aruba** (Smart WiFi Systems)
9. **ATB Park & Display** (Parking Ticketing Systems)
10. **Berliner Luftgütemessnetz** (Environm. sensors)
11. **Bernard Brenner** (Parking sensors)
12. **BigBelly** (Smart Trash bins)
13. **Breeze** (Environmental sensors)
14. **Brunata** (Heating meter)
15. **Cairns** (Smart Parking System)
16. **Cambio** (Car sharing platform)
17. **Chargecloud** (Charging stations)
18. **Chargelt** (Charging data)
19. **ChargePointOperator** (OCPI Charging data)
20. **Cisco Meraki** (Smart WiFi Systems)
21. **Civento** (Construction Sites)
22. **Clean City Networks** (Waste bin data)
23. **Cleverciti OffStreet** (Parking Management)
24. **Cleverciti OnStreet** (Parking Management)
25. **Cleverciti Ticks** (Parking Management)
26. **Cologne Parking** (Parking garages data)
27. **Cologne Traffic** (Traffic flow data, Traffic Obstructions)
28. **Comark Laser Scanner** (Bike detection sensors)
29. **Connctd IoT** (Smart Home System)
30. **Continental Carsharing** (Car sharing platform)
31. **Corona Incidence Report** (COVID-19 Situation)
32. **Count and Care** (MQTT connector)
33. **Crossfleet** (Car sharing platform)
34. **CSV Data** (generic data import)
35. **Datex II** (traffic data)
36. **DB ParkSpace** (Parking Data)
37. **DB Flinkster** (Car Sharing)
38. **DB Call a Bike** (Bike Sharing)
39. **DFKI onboard Unit** (Car Telemetry Interface)
40. **Discoveryg** (Smart Meter data)
41. **Duo Smart Noise** (Noise sensors)
42. **Eco-counter** (Traffic count data)
43. **e-sensio urban SmartBox** (Environmental Sensors)
44. **EDIFACT MSCONS** (Energy Data)
45. **Eluminocity** (Charging data)
46. **Emio** (Environmental sensors)
47. **EnBW Smight** (Smart lamp post, Environmental Sensing & EV Charger)
48. **Entega** (Energy Distribution Grid)
49. **Enevo** (Waste bin data)
50. **Entega** (Energy Distribution Grid)
51. **Feratel** (Event Calendar)
52. **FHEM** (Smart Home System)
53. **FlareSense** (Environmental data)
54. **FlexDB** (Energy data management system)
55. **Fleximoto** (Water level sensors)
56. **FLIR Flux** (Traffic Camera Server System)
57. **FLIR ITS** (Traffic Cameras)
58. **Floodmon** (Flood Monitoring System)
59. **GfS** (Noise & weather station)
60. **GoodMoovs Tomp** (Car sharing platform)
61. **Go Space Parking** (Parking data)
62. **GreenWay** (Digital Signs)
63. **Group Alarm** (Alarm notification system for mission critical operations)
64. **GTFS** (Public transport data)
65. **H2MParking** (Temporary parking data collection)
66. **HAMIS** (Harbor information system)
67. **Hawadawa** (Environmental sensors)
68. **HLNUG** (Environmental data)
69. **Homee** (Smart Home data)
70. **Hubeleon** (Chargepoint Management System)
71. **ICE Gateway** (Environmental sensors)
72. **Innogy Mobile API** (EV Charging Stations)
73. **INRIX** (Parking data)
74. **INRIX** (Traffic flow data)
75. **JSON Schema** (generic data import)
76. **KairosDB** (Timeseries Database Connector)
77. **Kerlink LoRa IoT Station** (LoRaWAN Gateway)
78. **Kimley Horn KITS** (Traffic data)
79. **Klimaherzen** (CO<sub>2</sub>-Savings Incentive system)
80. **KVB** (Public transport station data)
81. **LanUV** (NRW environment data)
82. **Las Vegas Traffic** (Traffic detector & signal state data)
83. **Last Mole Solutions** (EV Charging Stations)
84. **Libelium Plug&Sense Smart City** (Sensor devices)
85. **Libelium Plug&Sense Smart Environment** (Sensor devices)
86. **Libelium Plug&Sense Smart Environment Pro** (Sensor devices)
87. **LuenNi** (Niedersachsen environment data)
88. **manageE** (per second energy meter)
89. **Marine traffic** (Ship monitoring system)

# DKSR Open Urban Pulse Connector Library

Version: 2022-11-01

- 90. **Mercedes** (Traffic Incidents)
- 91. **Mobidata BW** (Bike Traffic)
- 92. **Mobileeee** (e-Carsharing data)
- 93. **Modality** (Container management system)
- 94. **Modbus** (Building Management System)
- 95. **MQTT** (generic MQTT Receiver)
- 96. **Mr. Fill** (Smart Trash bins)
- 97. **Netatmo** (Environmental Sensors)
- 98. **nextbike** (Bike sharing platform)
- 99. **Node Red** (Data flow system)
- 100. **NXP** (RFID tag data)
- 100. **OCIT-C** (Standard for Traffic Management Systems)
- 101. **OCPI Last Mile Solutions** (EV charging)
- 102. **Olbring** (water level sensors)
- 103. **One M2M** (cloud-to-cloud connector)
- 104. **OpenWeatherMap** (Weather data)
- 105. **OWLET Nightshift** (Luminaire status and energy consumption data)
- 106. **OWLET IOT** (Luminaire status and energy consumption data)
- 108. **Philips City Touch** (Smart Lighting)
- 109. **Public Wifi** (generic Wifi Locations)
- 110. **Purple Air** (Environmental Sensors)
- 111. **Purple Wifi** (Smart WiFi System)
- 112. **RhineCloud** (Parking data)
- 113. **Reekoh** (cloud-to-cloud connector)
- 114. **RMV** (Public Transport in Hessian, Germany)
- 115. **RTB Verkehrstechnik** (Traffic counting systems)
- 116. **Ruckus** (Smart WiFi System)
- 117. **RUDIS** (cloud-to-cloud connector)
- 118. **SAP Open e-Mobility** (Charging Stations)
- 119. **Scheer** (Energy management)

- 120. **Schröder EXEDRA** (Smart Lighting)
- 121. **Screen scraper** (Data extraction from websites)
- 122. **SCC geoserver** (spatial data)
- 123. **SCC Solarfarm** (PV and weather data)
- 124. **Scoot** (Adaptive Traffic Control Systems)
- 125. **SensorThings** (Open Geospatial Consortium- Standard)
- 126. **Sentry** (MQTT broker)
- 127. **SIEMENS SENTRON** (Energy Monitoring & Power Distribution)
- 128. **SIEMENS** (Traffic Management Systems)
- 129. **Smart City Systems** (Parking Data)
- 130. **Smart Link** (Irrigation data)
- 131. **Spot** (Environmental Sensors)
- 132. **SPP Analytics** (Signal Phase Timings)
- 133. **Stadtwerke Aalen** (Parking management)
- 134. **Sustainer** Brokerage (Smart Lighting)
- 135. **SWARCO KR** (Traffic Management System)
- 136. **SWARCO TMS** (Traffic Management System)
- 137. **Swisstraffic** (Traffic detector data)
- 138. **Tier Mobility** (Scooter Sharing)
- 139. **TomTom** (Traffic flow)
- 140. **Translink** (Public transport data)
- 141. **Tüga Plusportal** (Smart Wifi System)
- 142. **TVILIGHT** (Smart Lighting)
- 143. **[uii] TRAFFIC** (inner City traffic density)
- 144. **Vaisala** (Environment – receives pushed data)
- 145. **Vaisala beacon cloud** (Environment sensors)
- 146. **Vaisala Mobile Detector** (road conditions)
- 147. **VDH** (Traffic counting & video)

- 148. **Vivacity Labs Tracks** (Traffic management)
- 149. **Vivacity Labs V2** (Traffic management)
- 150. **Vivarium** (Smart Zoo)
- 151. **Viom Floating Car Data** (FCD)
- 152. **WaveScape** (Crowd based sound measurement platform)
- 153. **Wordpress (Newsfeed)**
- 154. **World Air Quality Index (AQICN)** – Json API
- 155. **Wunderfleet / Rhingo** (e-Scooter Data)
- 156. **YellowMap** (Charging stations in Germany)
- 157. **Ymatron** (Waste bin data)
- 158. **Zenner ElementIoT** (LoRaWAN network server)
- 159. **Zendesk** (Ticketing system)
- 160. **Zeta** (Charging controller)
- 161. **ZTIX** (Event Calendar)